

# Thermal Imaging Camera

Industry temperature measurement

## TE Series

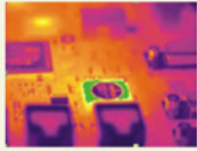
160×120 Uncool FPA detector

Low cost, small size

50Hz realtime measurement



# TE series Portable Thermal Imaging Camera



Color Warning



40 seconds of digital voice per image stored with image

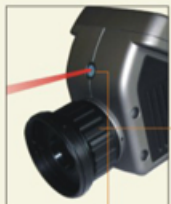


Voice Alarm

TE series is a special low cost real-time IR camera in 160X120 resolution. It combines the traits of economical practical and portable. The camera symbolizes easy-to-use, standard and professional, developing for those applications that need instant infrared troubleshooting in power plant, petrochemicals, scientific research, fire fighting, and building inspection, metallurgy, etc. .

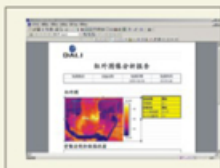


Low power consumption, 3 hours continuous operation



Laser Pointer

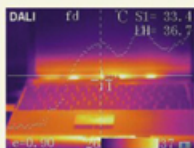
Manual Lens



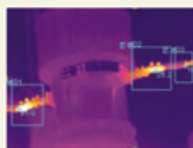
Free analysis software

## Parameter

	Item	TE	TE-P	
Detector characteristics	Detector type	Uncooled FPA microbolometer		
	Array size/format	160×120		
Image characteristics	Field of view/min focus distance	18°×13°/0.3m		
	Spatial resolution (IFOV)	1.9mrad		
	Thermal sensitivity	≤0.1°C@30°C		
	Framerate	60Hz	50/60Hz	
	Focus	Manual		
	Electronic zoom	N/A	2X	
	Spectral range	8-14μm		
Image display	LCD	Built-in high-resolution color 2.5" LCD		
Measurement	Temperature ranges	-20°C - +350°C	-20°C - +350°C, optional up to +600°C	
	Accuracy	± 2 °C or ± 2% of reading, whichever is greater		
	Measurement correction	Automatic/manual		
	Measurement mode	Movable spot, Movable area (maximum, minimum and average temperatures), Isotherm, Alarm (voice, color)	Up to 4 movable spots, Up to 3 movable areas (maximum, minimum and average temperatures), Line profile, Isotherm, Temperature difference, Alarm (voice, color)	
	Color palette	3 palettes changeable	11 palettes changeable	
	Image adjustment	Auto/manual gain and brightness		
	Setup functions	Date/time, temperature unit, language		
	Emissivity correction	Variable from 0.01 to 1.0		
	Ambient temperature correction	Automatic corrections according to user input		
	Atmospheric transmission correction	N/A	Automatic correction according to user input object distance, relative humidity, ambient temperature	
	Image storage	Storage memory	Built-in flash memory, Up to 1000 Images	Built-in flash memory, Up to 2000 Images
Storage mode		Manual single image saving	Automatic/manual single Image saving	
File format-thermal		JPEG, 14 bit thermal image with measurement data		
Voice annotation		N/A	Input via built-in microphone Up to 40 seconds of digital voice per image stored with image	
Laser pointer	Laser pointer	Class 2, 1mw/635nm (red)		
Power supply	Battery type	Li-Ion, rechargeable		
	Battery operating time	3 hours continuous operation		
	Charging system	Intelligent charger or power supply adaptor (optional) online charge		
	Power saving	YES		
	External power	N/A	10-15V DC	
Environment	Operating temperature	-15°C - +50°C		
	Humidity	≤90% non-condensing		
	Encapsulation	IP54		
Physical characteristics	Weight	0.6Kg		
	Dimensions	250mm×100mm×72mm		
Interface	External DC input	N/A	Yes	
	Audio output	N/A	Yes	
	Video output	N/A	PAL/NTSC	
	USB	Image, measurement data transfer to PC	Image, measurement Audio data transfer to PC	



Line measurement



Area measurement



Optional Lenses